

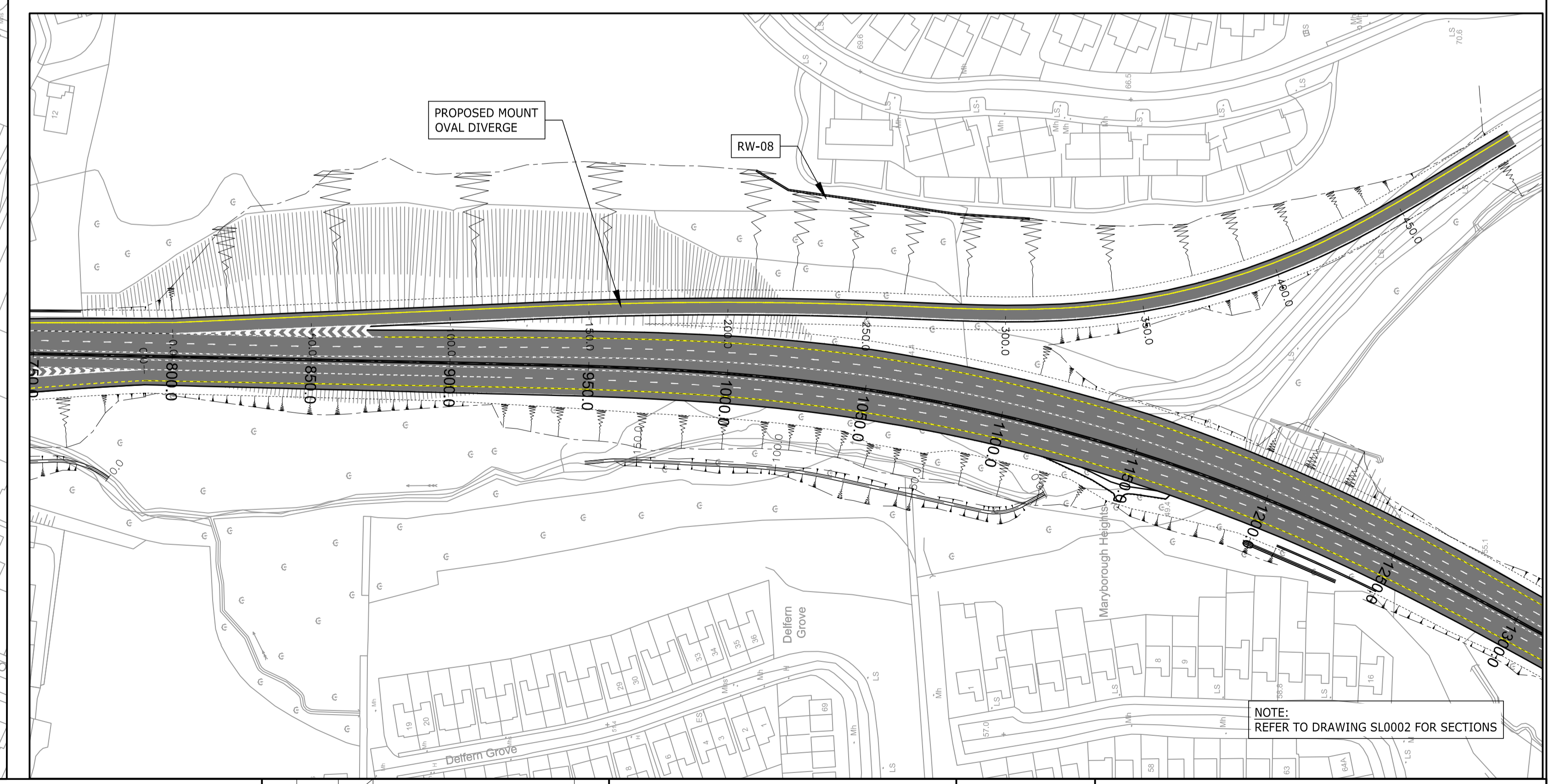
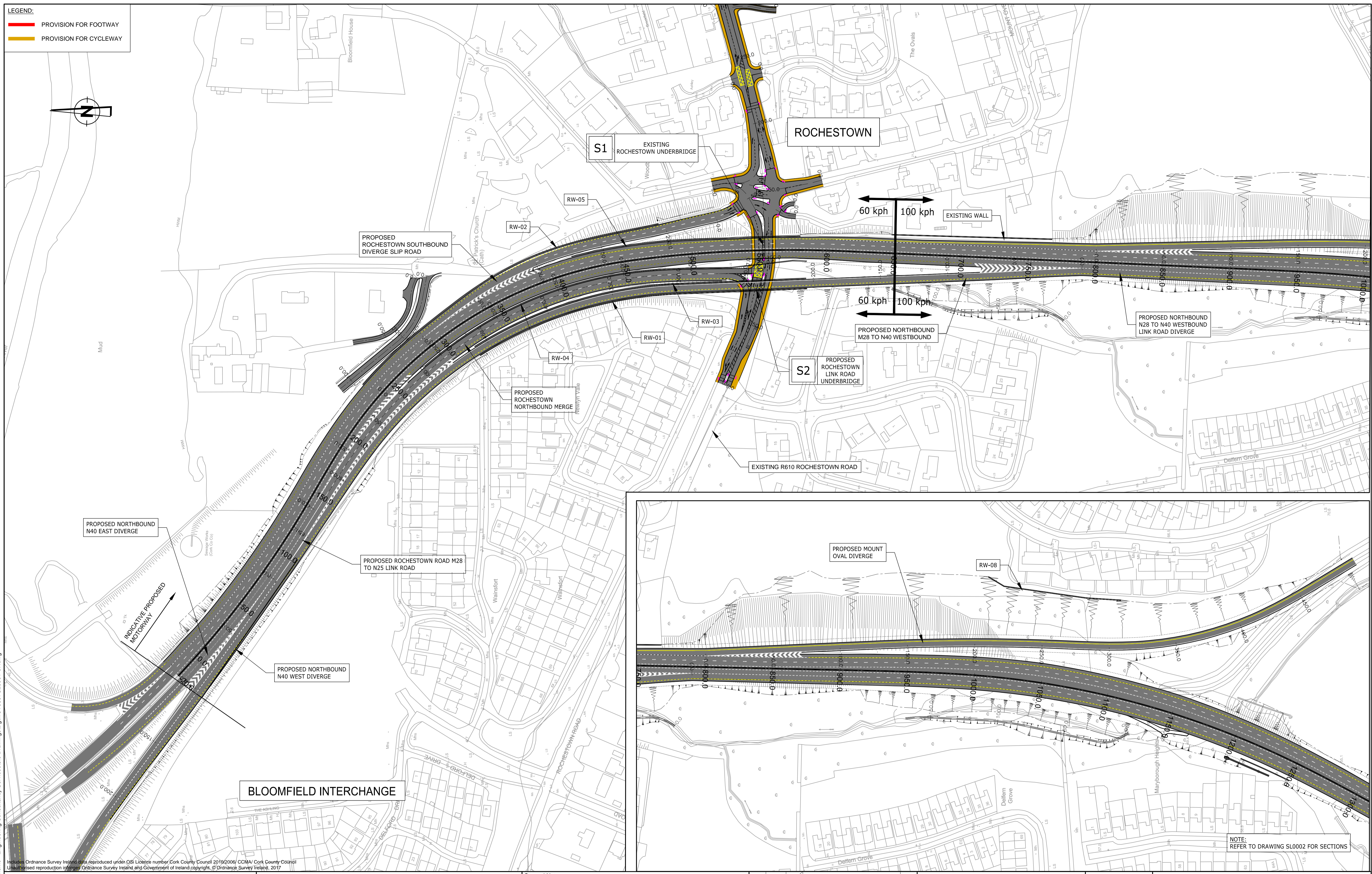
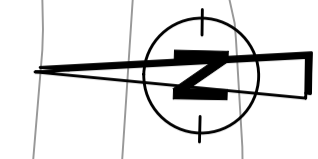


LEGEND:
 PROVISION FOR FOOTWAY
 PROVISION FOR CYCLEWAY




NOTE:
REFER TO DRAWING SL0002 FOR SECTIONS

Includes Ordnance Survey Ireland data reproduced under OSI License number Cork County Council 2019/2006/ CCMA/ Cork County Council
 Unauthorised reproduction infringes Ordnance Survey Ireland and Government of Ireland copyright. © Ordnance Survey Ireland, 2017

Client



TII
 Bonneagar Iompair Éireann
 Transport Infrastructure Ireland



Cork County Council
 National Roads Office,
 Richmond,
 Glanmire,
 Co. Cork.
 Tel. No: (021) 4821046
 Fax. No: (021) 4866209

General Notes
 (i) This drawing is the property of RPS Consulting Engineers, it is a confidential document and must not be copied, used, or its content divulged without prior written consent.
 (ii) All Levels refer to Ordnance Survey Datum, Malin Head.
 (iii) DO NOT SCALE, use figured dimensions only, if in doubt ask.
 (iv) Hard copies, dwf and pdf will form a controlled issue of the drawing. All other formats (dwg etc) are deemed to be an uncontrolled issue and any work carried out based on these files is at the recipients own risk. RPS will not accept any responsibility for any errors from the use of these files, either by human error by the recipient, listing of the un-dimensioned measurements, compatibility with the recipients software, and any errors arising when these files are used to aid the recipients drawing production, or setting out on site.

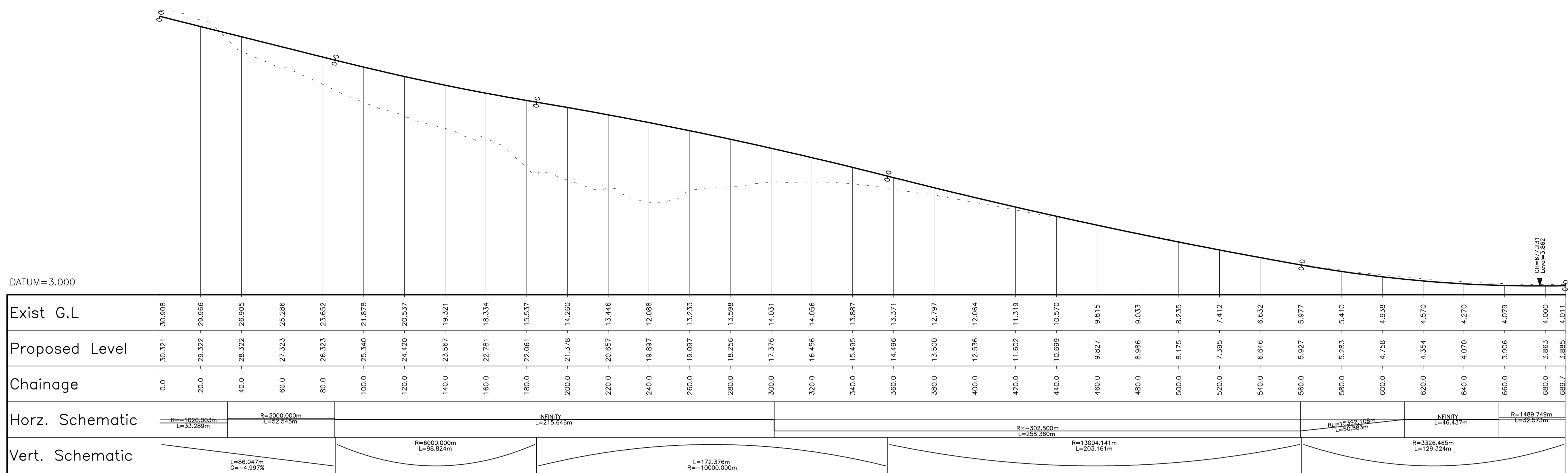
No.	Date	By	App	Amendment / Issue
F01	MAY 17	DP	MN	FINAL ISSUE



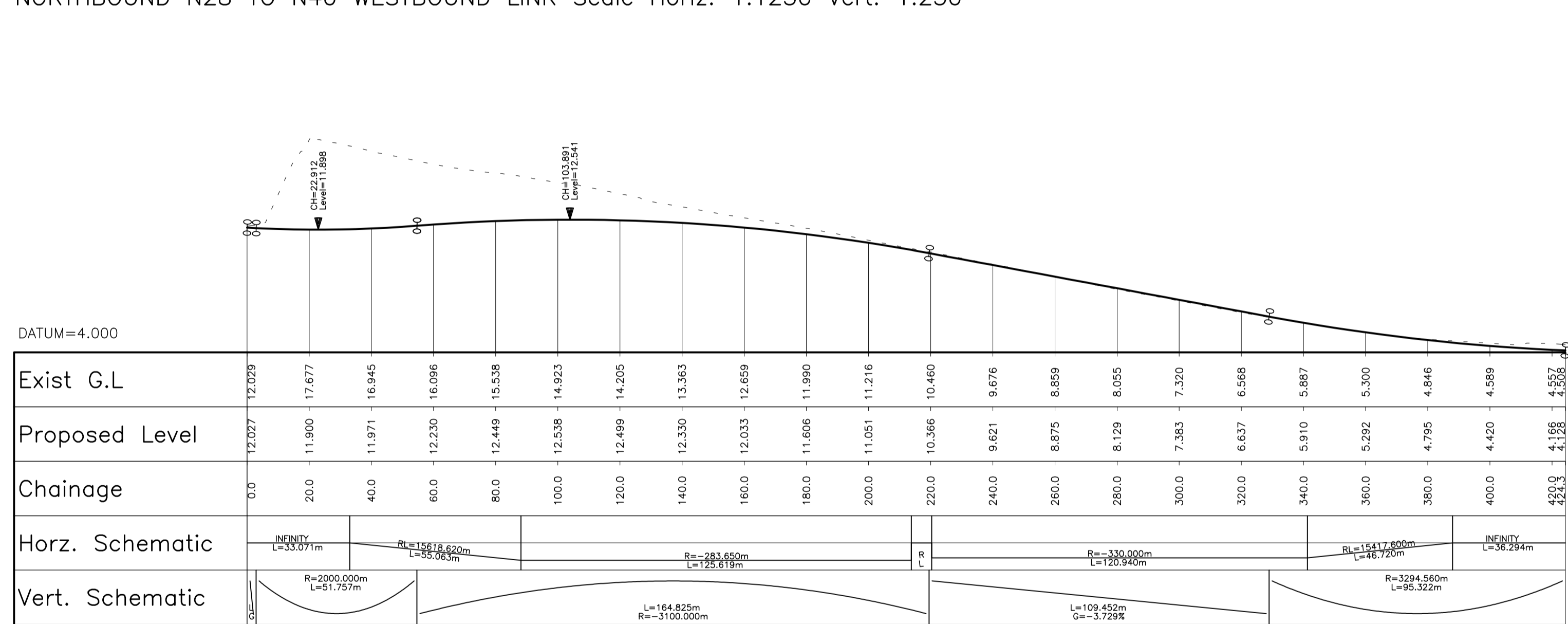
RPS
 Innishmore
 Ballincollig
 Co. Cork
 Ireland
 T +353 21 4665900
 W www.rpsgroup.com/ireland
 E ireland@rpsgroup.com

Project		Title	
Drawn	DH	M28 CORK TO RINGASKIDDY PROJECT	
Checked	PB	GEOMETRICS	
Approved	MN	SLIP ROAD GEOMETRICS	
Date	OCT. 2014	SHEET 1 OF 6	
Scale	1:2500 @ A3 1:1250 @ A1	Job No.	MCT0597
File Ref.	MCT0597SL0001-07.dwg	Drg. No.	SL0001
Rev.	F01		

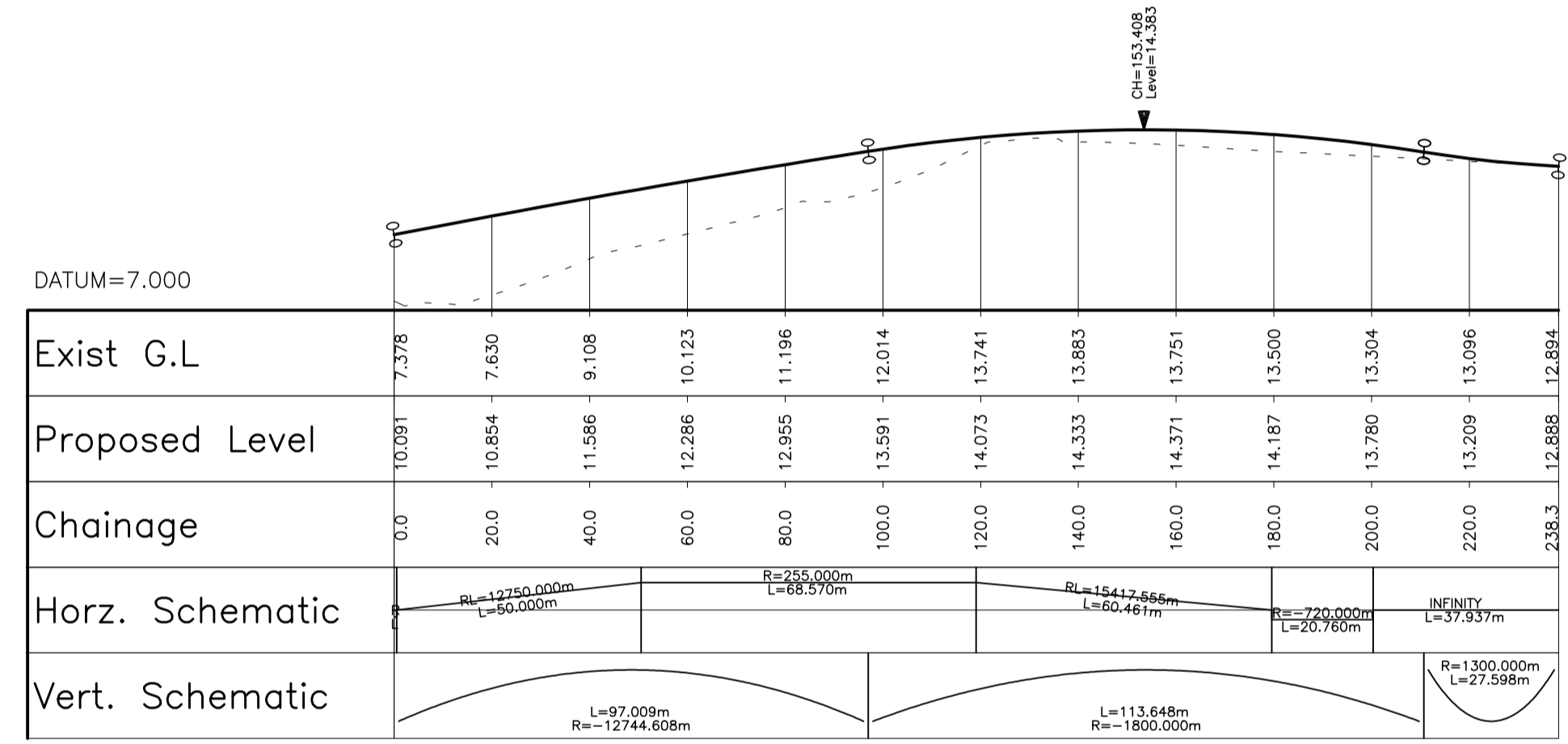
R:\MCT0597 - N28 Upgrade Scheme - Engineering Consultancy Services\6.0 Drawings\DWG\MCT0597\SL0001-07.dwg



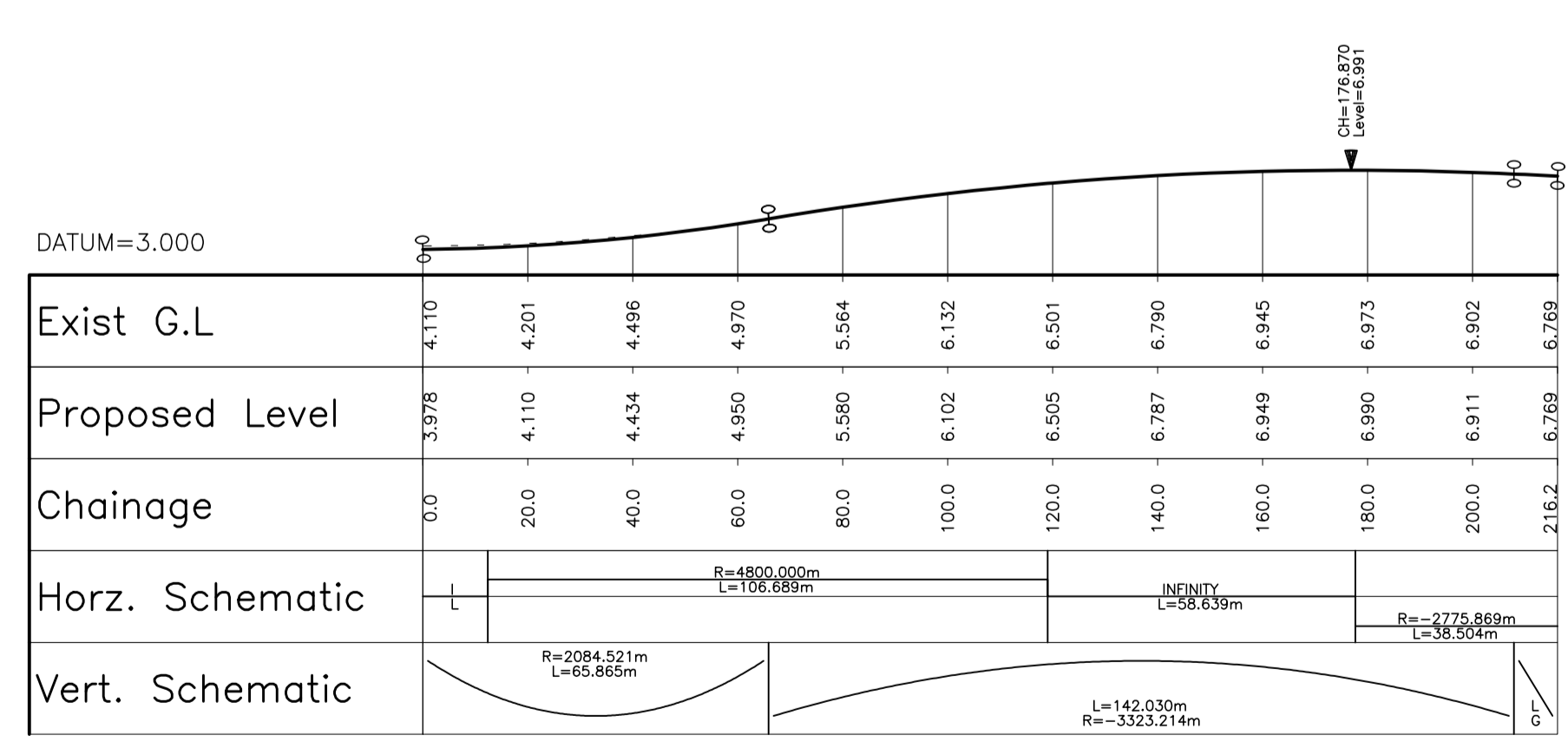
NORTHBOUND N28 TO N40 WESTBOUND LINK Scale Horiz. 1:1250 Vert. 1:250



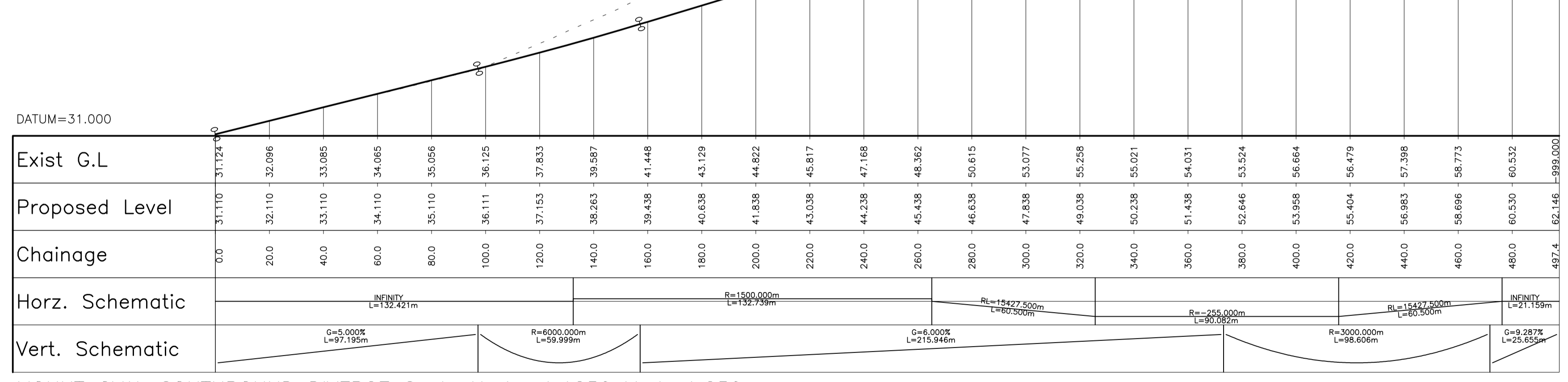
ROCHESTOWN NORTHBOUND MERGE Scale Horiz. 1:1250 Vert. 1:250



ROCHESTOWN SOUTHBOUND DIVERGE Scale Horiz. 1:1250 Vert. 1:250



NORTHBOUND N40 WEST DIVERGE Scale Horiz. 1:1250 Vert. 1:250



MOUNT OVAL SOUTHBOUND DIVERGE Scale Horiz. 1:1250 Vert. 1:250

R:\MCT0597 - N28 Upgrade Scheme - Engineering Consultancy Services\6.0 Drawings\GdMCT0597\SL0001-07.dwg

Includes Ordnance Survey Ireland data reproduced under OSI Licence number Cork County Council 2010/2006/ CCMA/ Cork County Council
Unauthorised reproduction infringes Ordnance Survey Ireland and Government of Ireland copyright. © Ordnance Survey Ireland, 2017

Client

Cork County Council
National Roads Office,
Richmond,
Glanmire,
Co. Cork.
Tel. No: (021) 4821046
Fax. No: (021) 4866209



General Notes

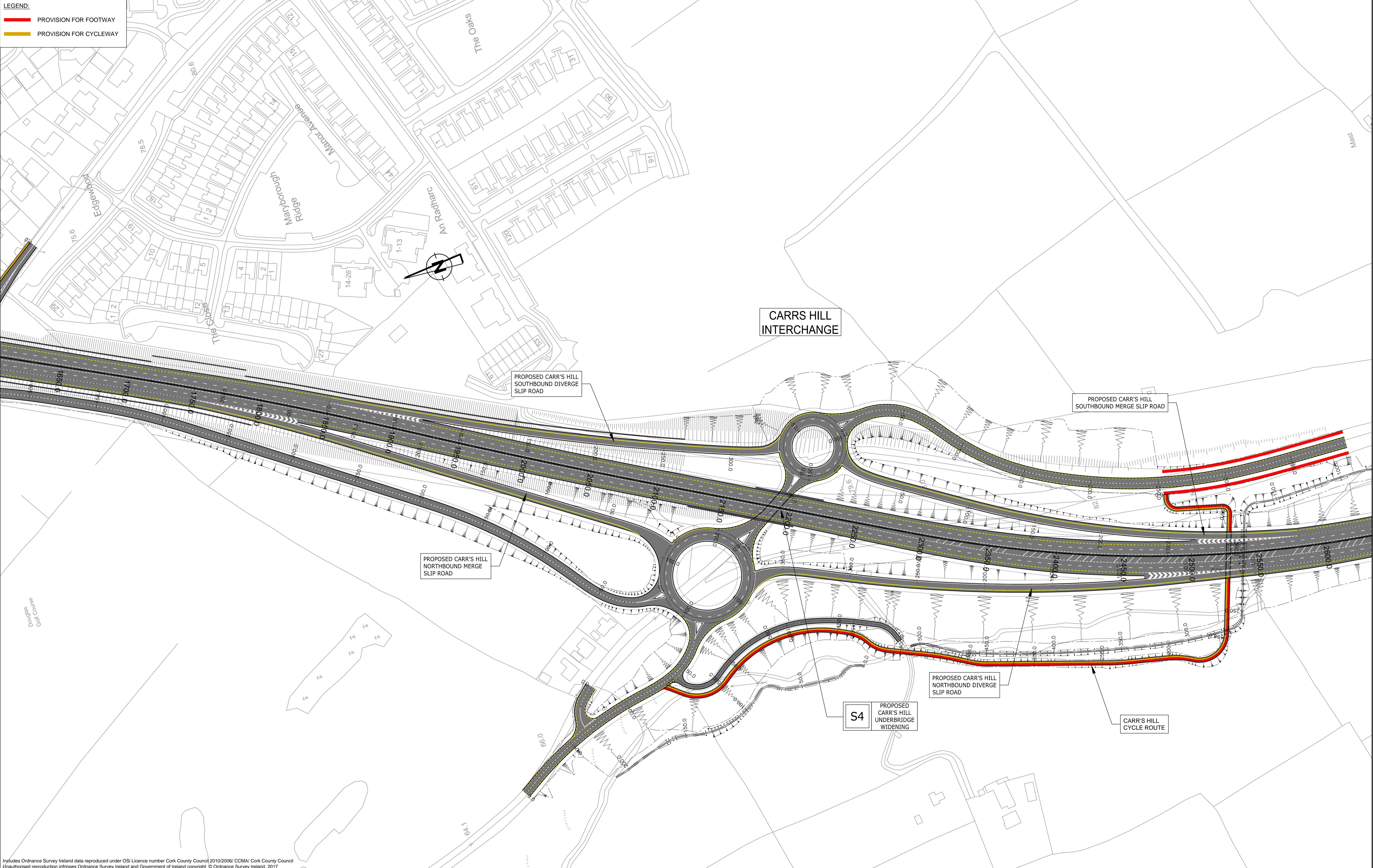
- (i) This drawing is the property of RPS Consulting Engineers, it is a confidential document and must not be copied, used, or its content divulged without prior written consent.
- (ii) All Levels refer to Ordnance Survey Datum, Malin Head.
- (iii) DO NOT SCALE: use figured dimensions only, if in doubt ask.
- (iv) Hard copies, dwf and pdf will form a controlled issue of the drawing. All other formats (dwg etc) are deemed to be an uncontrolled issue and any work carried out based on these files is at the recipients own risk. RPS will not accept any responsibility for any errors from the use of these files, either by human error by the recipient, listing of the un-dimensioned measurements, compatibility with the recipients software, and any errors arising when these files are used to aid the recipients drawing production, or setting out on site.

F01	MAY 17	DL	20	FINAL ISSUE	MM
No.	Date	By	Chk	Amendment / Issue	App

T +353 21 4665900
W www.rpsgroup.com/ireland
E ireland@rpsgroup.com

Drawn	DH	Project	M28 CORK TO RINGASKIDDY PROJECT				
Checked	PB						
Approved	MN						
Date	OCT. 2014	Title	GEOMETRICS				
Scale	1:2500 @ A3 1:1250 @ A1		SLIP ROAD GEOMETRICS SHEET 2 OF 6				
Job No.	MCT0597	File Ref.	MCT0597SL0001-07.dwg	Drg. No.	SL0002	Rev.	F01


LEGEND:
 PROVISION FOR FOOTWAY
 PROVISION FOR CYCLEWAY



Client



TII
 Bonneagar Iompair Éireann
 Transport Infrastructure Ireland



Cork County Council
 National Roads Office,
 Richmond,
 Glanmire,
 Co. Cork. Tel. No: (021) 4821046
 Fax. No: (021) 4866209

General Notes
 (i) This drawing is the property of RPS Consulting Engineers, it is a confidential document and must not be copied, used, or its content divulged without prior written consent.
 (ii) All Levels refer to Ordnance Survey Datum, Malin Head.
 (iii) DO NOT SCALE, use figured dimensions only, if in doubt ask.
 (iv) Hard copies, dwf and pdf will form a controlled issue of the drawing. All other formats (dvg etc) are deemed to be an uncontrolled issue and any work carried out based on these files is at the recipients own risk. RPS will not accept any responsibility for any errors from the use of these files, either by human error by the recipient, listing of the un-dimensioned measurements, compatibility with the recipients software, and any errors arising when these files are used to aid the recipients drawing production, or setting out on site.

No.	Date	By	App	Amendment / Issue
F01	MAY 17	DP	MN	FINAL ISSUE

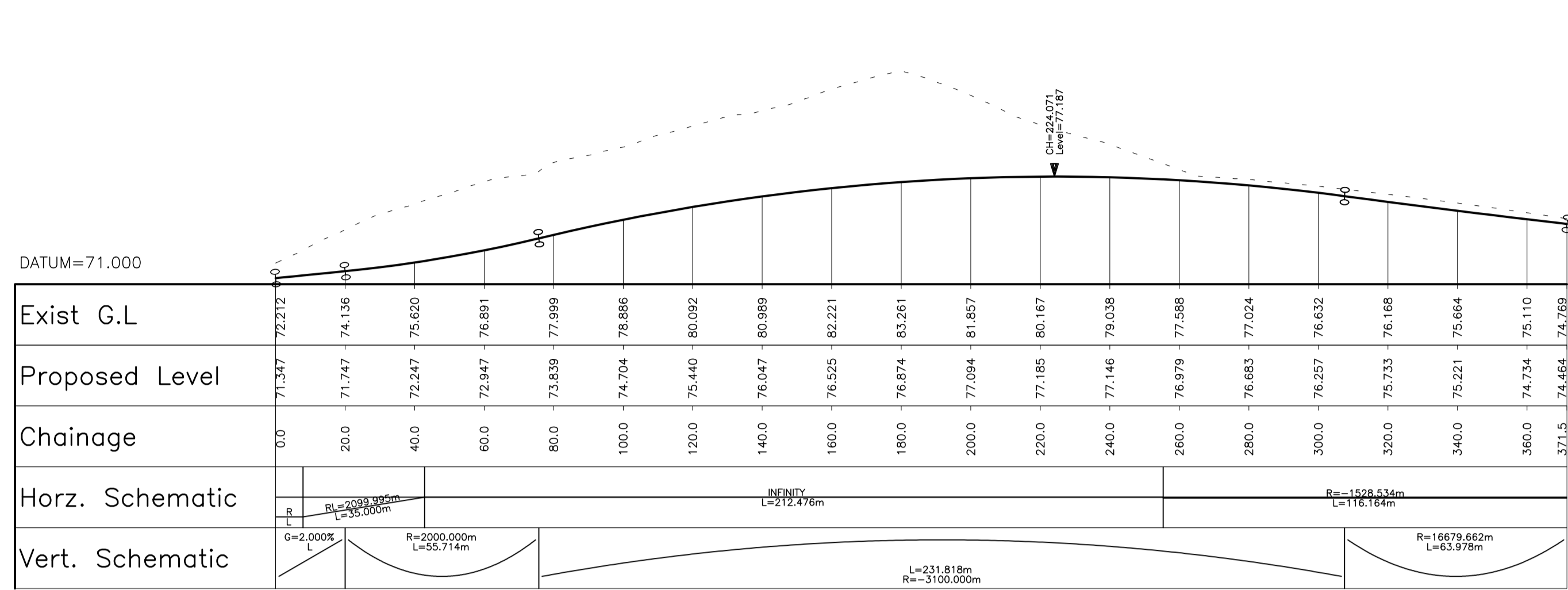


RPS
 Innishmore
 Ballincollig
 Co. Cork
 Ireland
 T +353 21 4665900
 W www.rpsgroup.com/ireland
 E ireland@rpsgroup.com

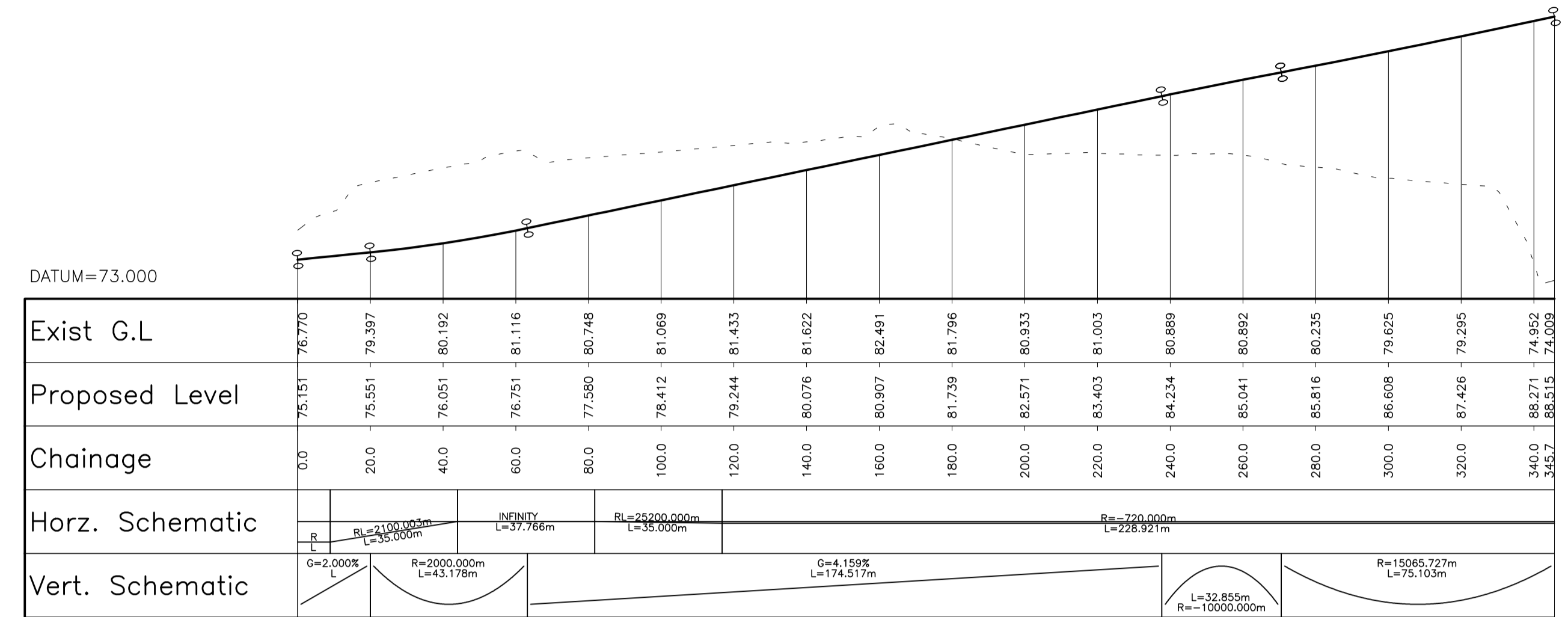
Drawn	DH	Project	M28 CORK TO RINGASKIDDY PROJECT		
Checked	PB	Title	GEOMETRICS SLIP ROAD GEOMETRICS SHEET 3 OF 6		
Approved	MN	Job No.	MCT0597	File Ref.	MCT0597SL0001-07.dwg
Date	OCT. 2014	Drg. No.	SL0003	Rev.	F01
Scale	1:2500 @ A3 1:1250 @ A1				

R:\MCT0597 - N28 Upgrade Scheme - Engineering Consultancy Services\6.0 Drawings\DWG\MCT0597SL0001-07.dwg

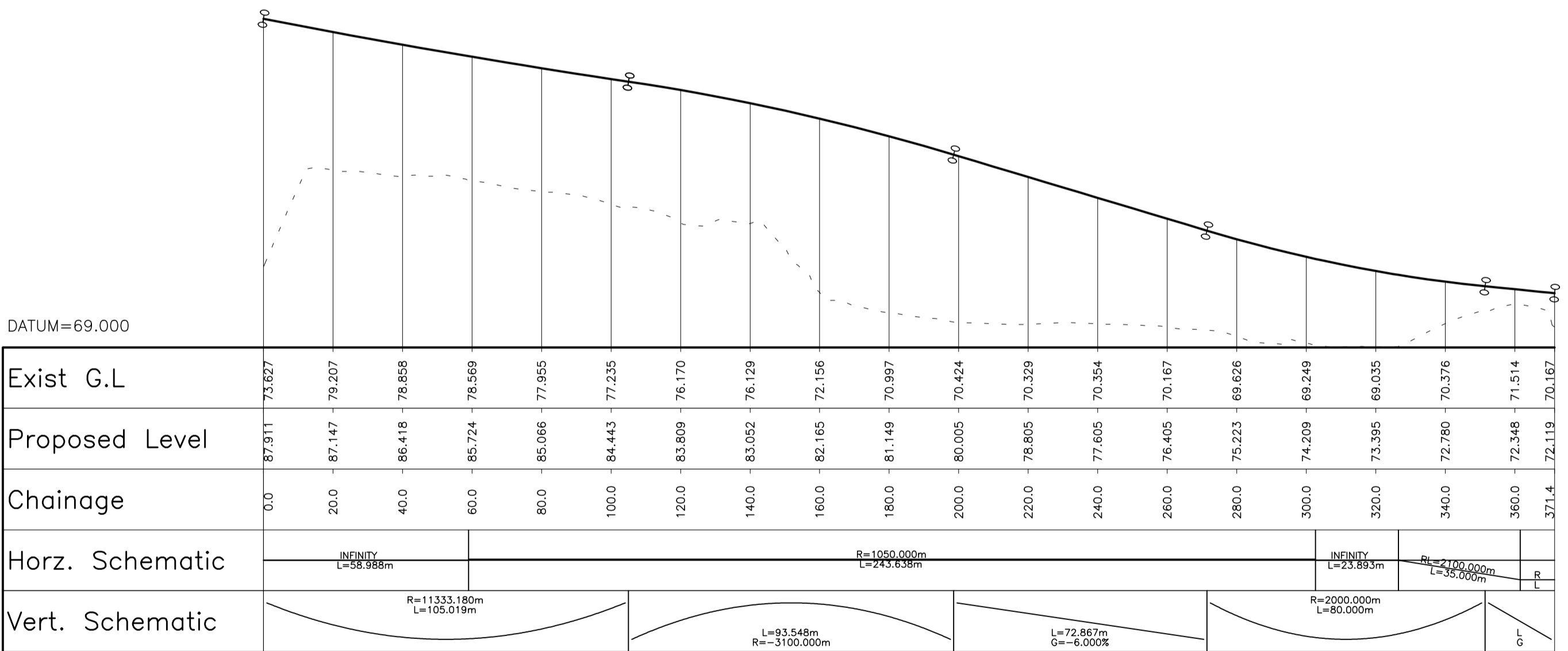
Includes Ordnance Survey Ireland data reproduced under OSI Licence number Cork County Council 2010/2006/ CCMA/ Cork County Council
 Unauthorised reproduction infringes Ordnance Survey Ireland and Government of Ireland copyright. © Ordnance Survey Ireland, 2017



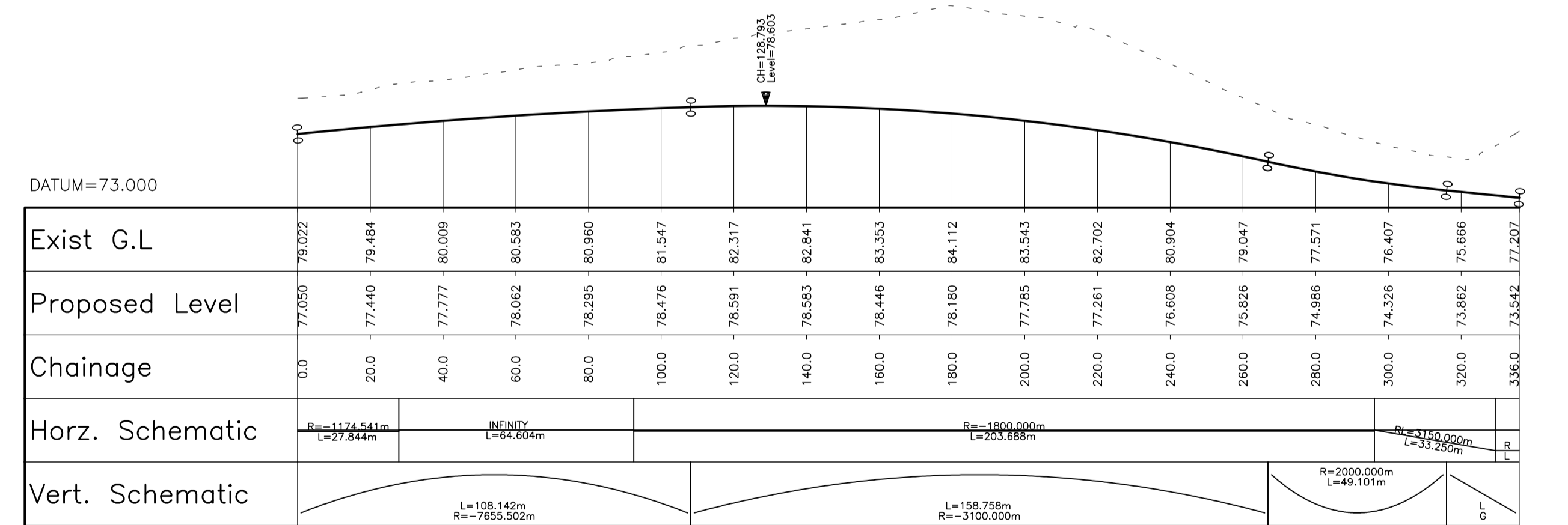
CARRS HILL NORTHBOUND MERGE Scale Horiz. 1:1250 Vert. 1:250



CARRS HILL SOUTHBOUND MERGE Scale Horiz. 1:1250 Vert. 1:250



CARRS HILL NORTHBOUND DIVERGE Scale Horiz. 1:1250 Vert. 1:250



CARRS HILL SOUTHBOUND DIVERGE Scale Horiz. 1:1250 Vert. 1:250

R:\MCT0597 - N28 Upgrade Scheme - Engineering Consultancy Services\6.0 Drawings\DMCT0597\SL001-07.dwg

Includes Ordnance Survey Ireland data reproduced under OSI Licence number Cork County Council 2010/2006/ CCMA/ Cork County Council
Unauthorised reproduction infringes Ordnance Survey Ireland and Government of Ireland copyright. © Ordnance Survey Ireland, 2017

Client





Cork County Council
National Roads Office,
Richmond,
Glanmire,
Co. Cork. Tel. No: (021) 4821046
Fax. No: (021) 4866209

General Notes

(i) This drawing is the property of RPS Consulting Engineers, it is a confidential document and must not be copied, used, or its content divulged without prior written consent.
(ii) All Levels refer to Ordnance Survey Datum, Malin Head.
(iii) DO NOT SCALE: use figured dimensions only, if in doubt ask.
(iv) Hard copies, dwf and pdf will form a controlled issue of the drawing. All other formats (dwg etc) are deemed to be an uncontrolled issue and any work carried out based on these files is at the recipients own risk. RPS will not accept any responsibility for any errors from the use of these files, either by human error by the recipient, listing of the un-dimensioned measurements, compatibility with the recipients software, and any errors arising when these files are used to aid the recipients drawing production, or setting out on site.

No.	Date	By	App	Amendment / Issue
F01	MAY 17	DH	ANN	FINAL ISSUE

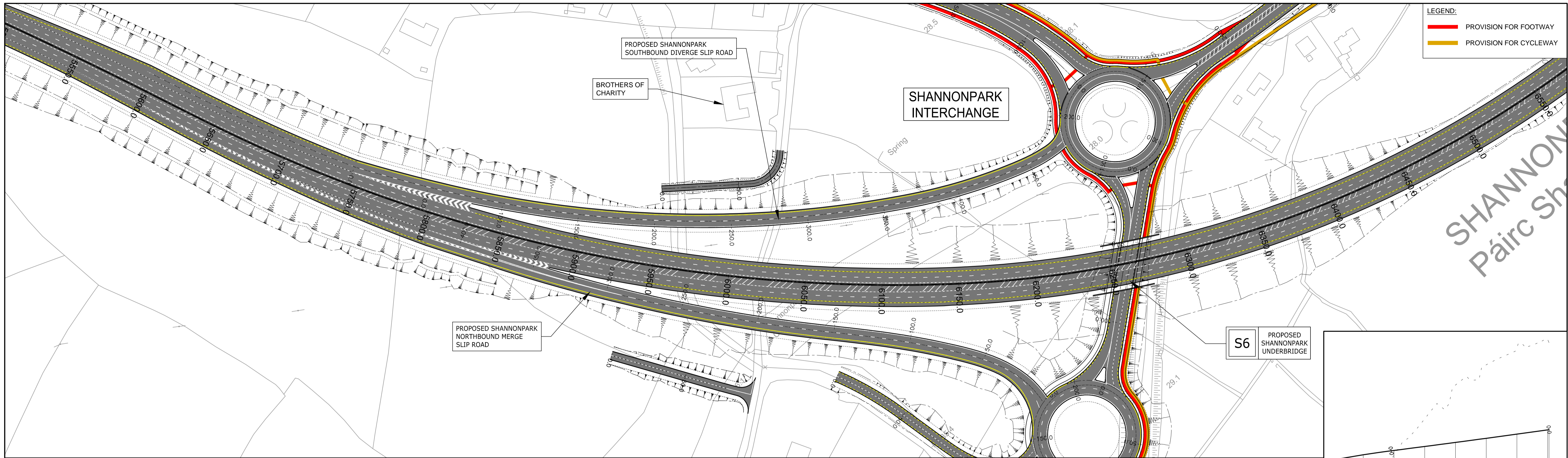


Innishmore
Ballincollig
Co. Cork
Ireland

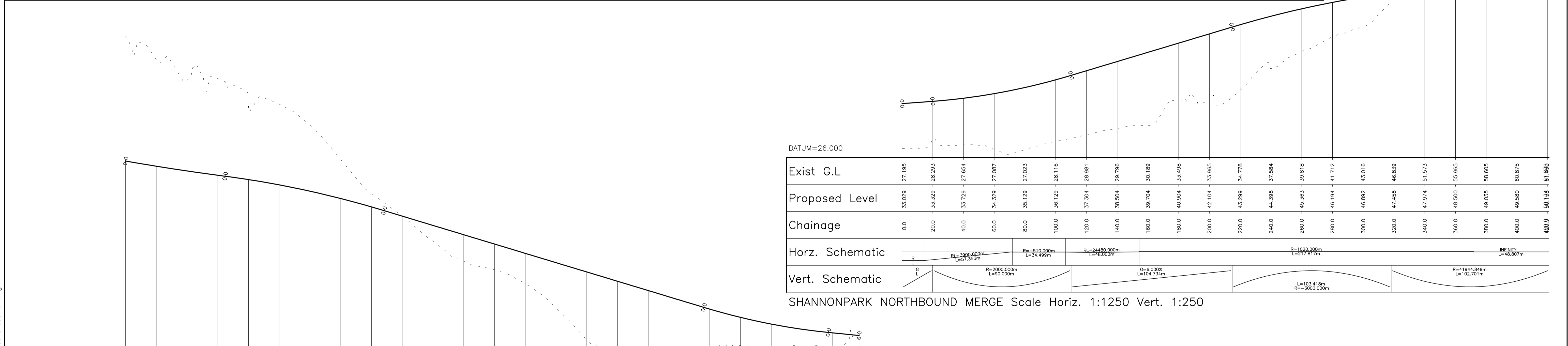
T +353 21 4665900
W www.rpsgroup.com/ireland
E ireland@rpsgroup.com

Drawn	DH
Checked	PB
Approved	MN
Date	OCT. 2014
Scale	1:2500 @ A3 1:1250 @ A1
Job No.	MCT0597

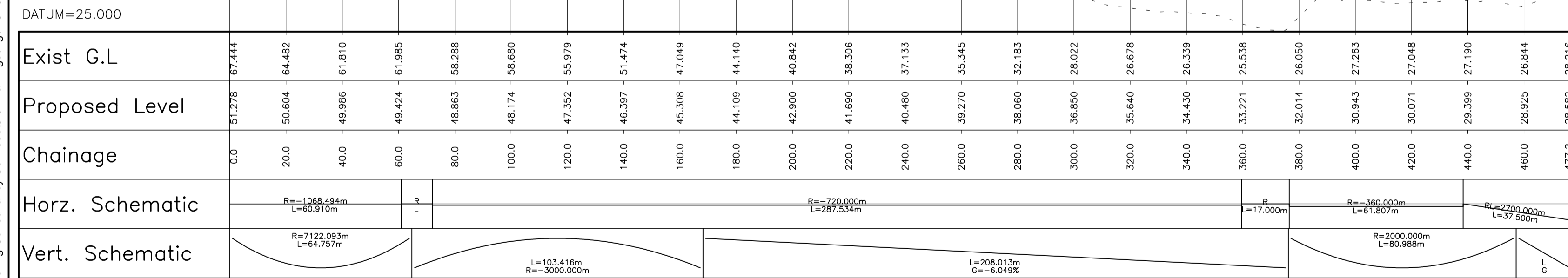
Project	M28 CORK TO RINGASKIDDY PROJECT		
Title	GEOMETRICS SLIP ROAD GEOMETRICS SHEET 4 OF 6		
File Ref.	MCT0597SL001-07.dwg	Drg. No.	SL0004
Rev.	F01		



LEGEND:
 PROVISION FOR FOOTWAY
 PROVISION FOR CYCLEWAY



SHANNONPARK NORTHBOUND MERGE Scale Horiz. 1:1250 Vert. 1:250



SHANNONPARK SOUTHBOUND DIVERGE Scale Horiz. 1:1250 Vert. 1:250

Includes Ordnance Survey Ireland data reproduced under OSI Licence number Cork County Council 2010/2006/ CCMA/ Cork County Council
 Unauthorised reproduction infringes Ordnance Survey Ireland and Government of Ireland copyright. © Ordnance Survey Ireland, 2017

Client

Cork County Council
 National Roads Office,
 Richmond,
 Glanmire,
 Co. Cork.
 Tel. No: (021) 4821046
 Fax. No: (021) 4866209

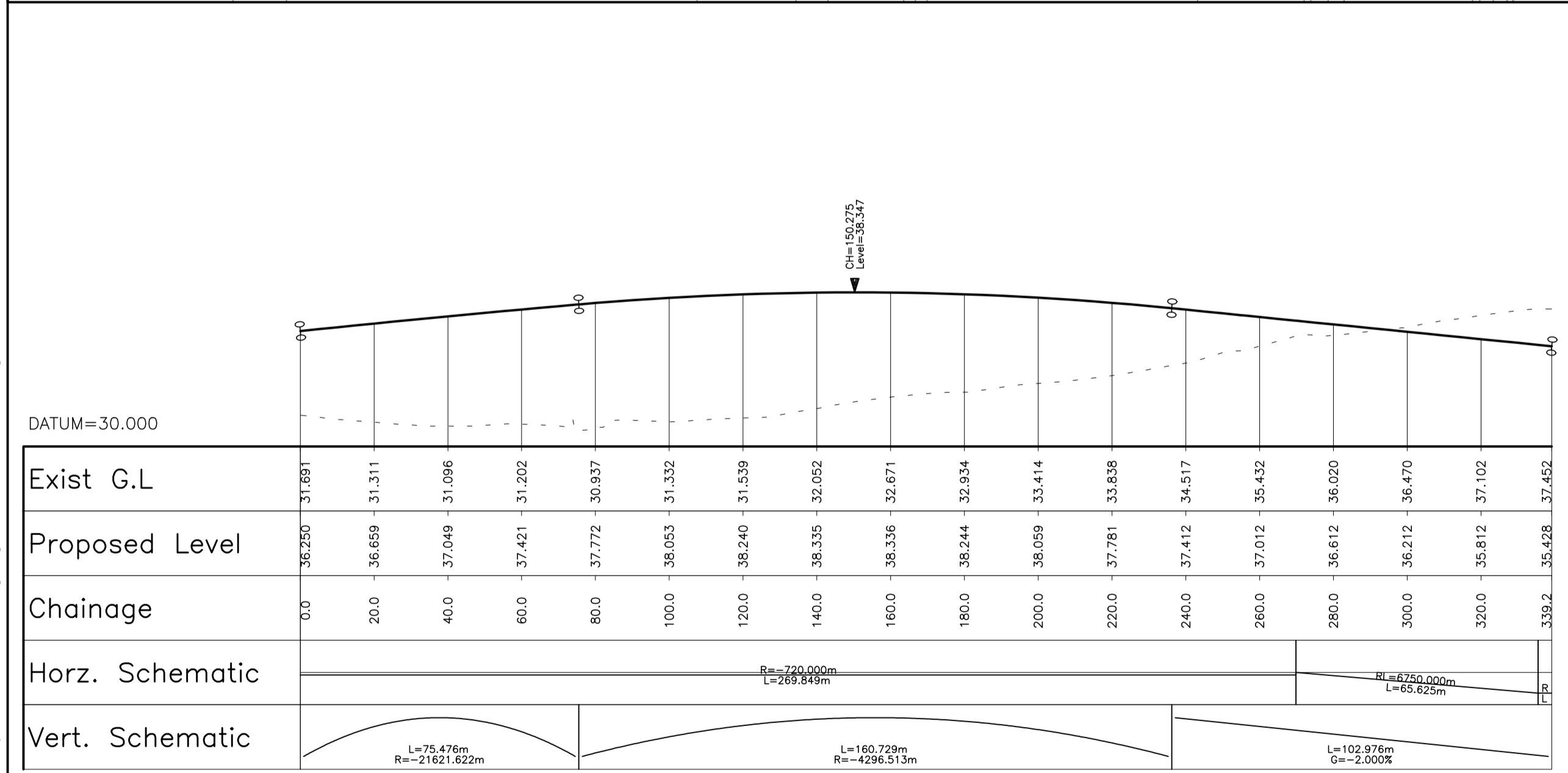
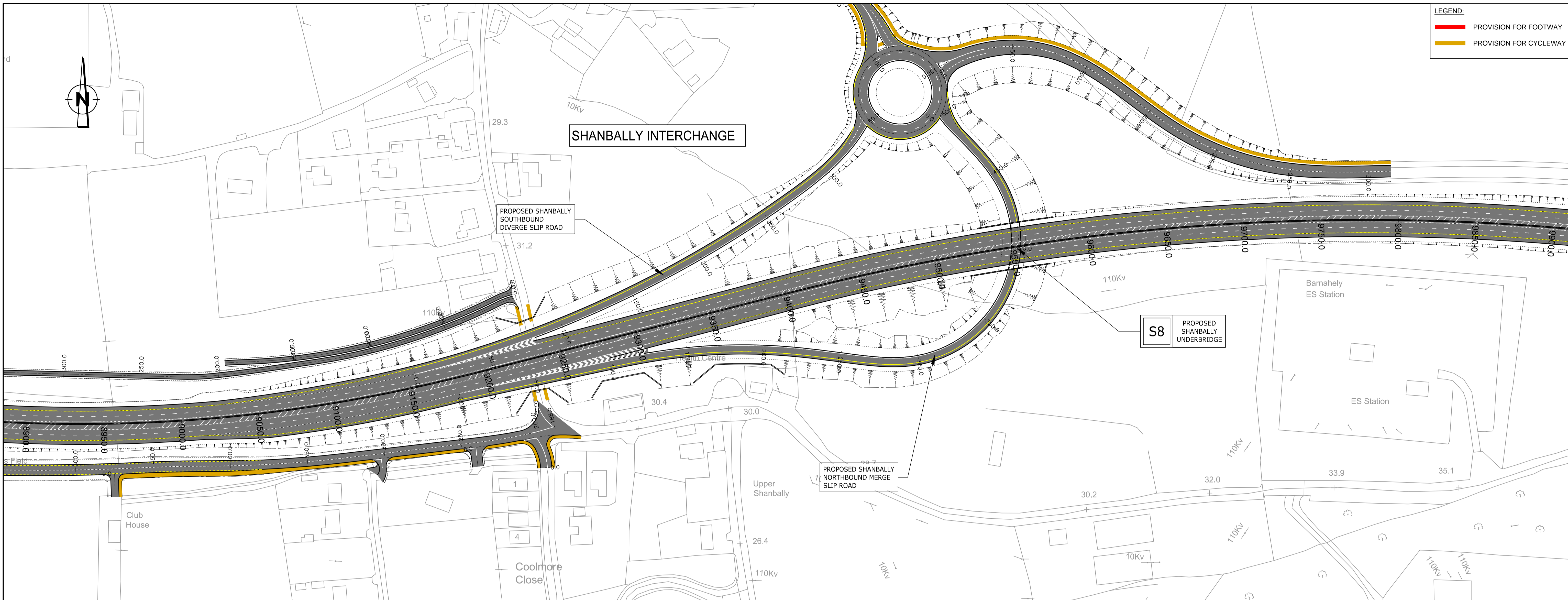
General Notes
 (i) This drawing is the property of RPS Consulting Engineers, it is a confidential document and must not be copied, used, or its content divulged without prior written consent.
 (ii) All Levels refer to Ordnance Survey Datum, Malin Head.
 (iii) DO NOT SCALE: use figured dimensions only, if in doubt ask.
 (iv) Hard copies, dwf and pdf will form a controlled issue of the drawing. All other formats (dwg etc) are deemed to be an uncontrolled issue and any work carried out based on these files is at the recipients own risk. RPS will not accept any responsibility for any errors from the use of these files, either by human error by the recipient, listing of the un-dimensioned measurements, compatibility with the recipients software, and any errors arising when these files are used to aid the recipients drawing production, or setting out on site.

No.	Date	By	App	Amendment / Issue
F01	MAY 17	DP	MN	FINAL ISSUE

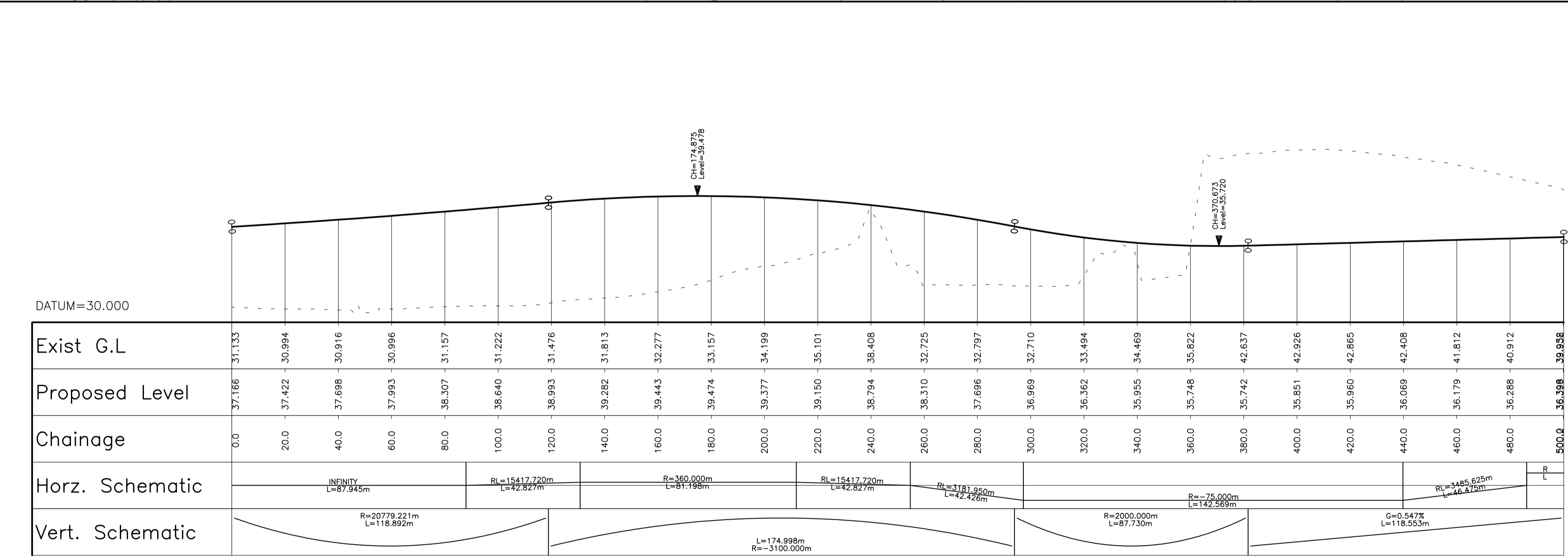
T +353 21 4665900
 W www.rpsgroup.com/ireland
 E ireland@rpsgroup.com

Drawn	DH	Project	M28 CORK TO RINGASKIDDY PROJECT	
Checked	PB	Approved	MN	
Date	OCT. 2014	Title	GEOMETRICS SLIP ROAD GEOMETRICS SHEET 5 OF 6	
Scale	1:2500 @ A3 1:1250 @ A1	Job No.	MCT0597	File Ref. MCT0597SL0001-07.dwg
Drg. No.	SL0005	Rev.	F01	

R:\MCT0597 - N28 Upgrade Scheme - Engineering Consultancy Services\6.0 Drawings\DWG\MCT0597SL0001-07.dwg



SHANBALLY SOUTHBOUND DIVERGE Scale Horiz. 1:1250 Vert. 1:250



SHANBALLY NORTHBOUND MERGE Scale Horiz. 1:1250 Vert. 1:250

Includes Ordnance Survey Ireland data reproduced under OSI Licence number Cork County Council 2010/2006/ CCMA/ Cork County Council
 Unauthorised reproduction infringes Ordnance Survey Ireland and Government of Ireland copyright. © Ordnance Survey Ireland, 2017

Client

TII
 Bonneagar Iompair Éireann
 Transport Infrastructure Ireland

Cork County Council
 National Roads Office,
 Richmond,
 Glanmire,
 Co. Cork.
 Tel. No: (021) 4821046
 Fax. No: (021) 4866209

General Notes
 (i) This drawing is the property of RPS Consulting Engineers, it is a confidential document and must not be copied, used, or its content divulged without prior written consent.
 (ii) All Levels refer to Ordnance Survey Datum, Malin Head.
 (iii) DO NOT SCALE: use figured dimensions only, if in doubt ask.
 (iv) Hard copies, dwf and pdf will form a controlled issue of the drawing. All other formats (dwtg etc) are deemed to be an uncontrolled issue and any work carried out based on these files is at the recipients own risk. RPS will not accept any responsibility for any errors from the use of these files, either by human error by the recipient, listing of the un-dimensioned measurements, compatibility with the recipients software, and any errors arising when these files are used to aid the recipients drawing production, or setting out on site.

F01	MAY17	DP	FINAL ISSUE	MM
No.	Date	By	Amendment / Issue	App

RPS
 Innishmore
 Ballincollig
 Co. Cork
 Ireland
 T +353 21 4665900
 W www.rpsgroup.com/ireland
 E ireland@rpsgroup.com

Drawn	DH	Project	M28 CORK TO RINGASKIDDY PROJECT		
Checked	PB	Title	GEOMETRICS SLIP ROAD GEOMETRICS SHEET 6 OF 6		
Approved	MN	Scale	1:2500 @ A3 1:1250 @ A1		
Date	OCT. 2014	Job No.	MCT0597	File Ref.	MCT0597SL0001-07.dwg
Scale	1:2500 @ A3 1:1250 @ A1	Drg. No.	SL0006	Rev.	F01